

Setting a new standard for optimized workflow automation

 Automation Engine

At the heart of your prepress

Built specifically for businesses in the print and packaging industry, Automation Engine delivers powerful optimized prepress workflow automation to save time and money through increased efficiency and throughput.

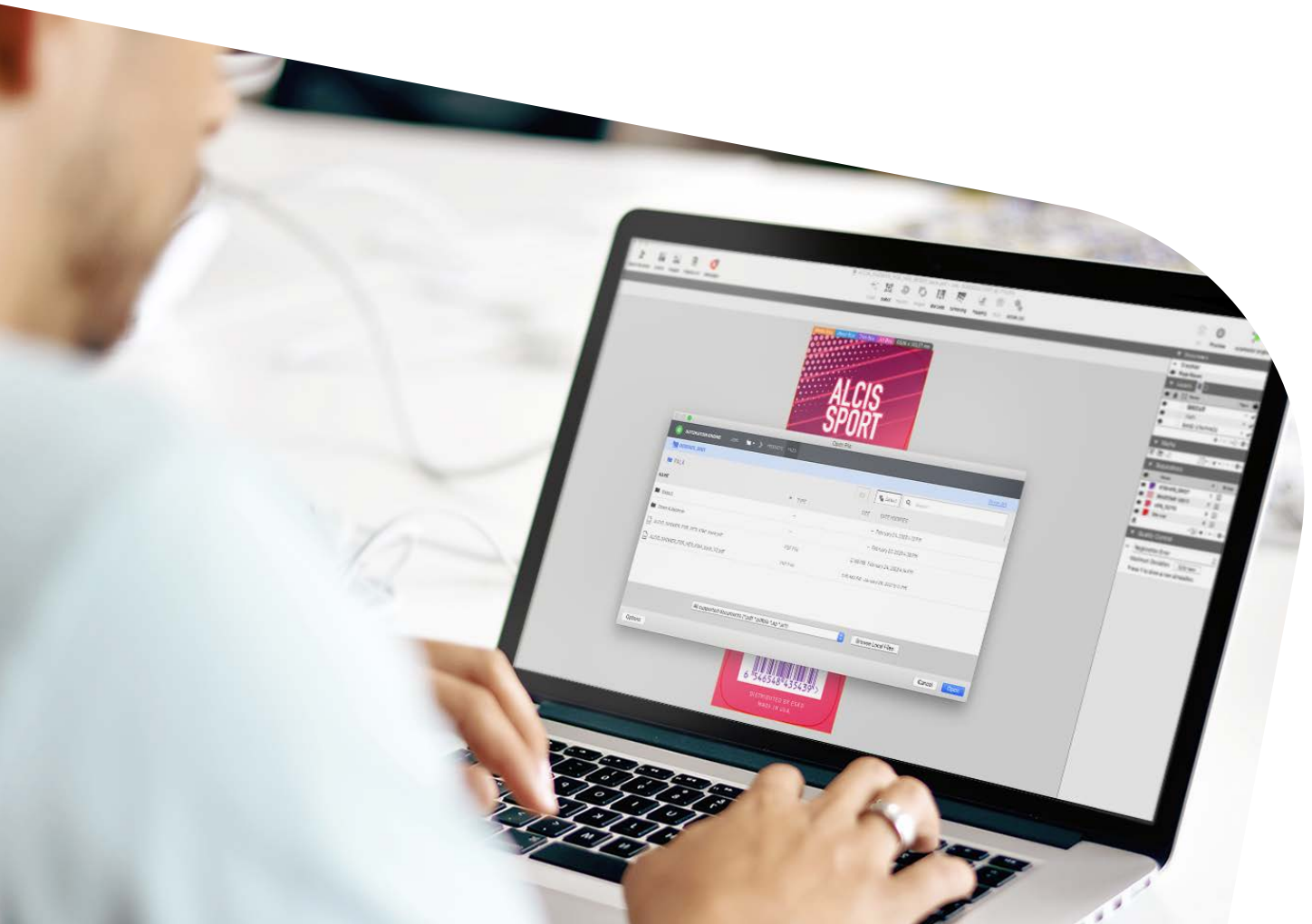
It automates print production tasks and integrates with business systems, which speeds up the process, but also reduces the error rate and the need for operator intervention.

It is, by all standards, an exceptional answer to the daily challenges of prepress and print professionals who need to increase quality, reduce errors and drive cost out of the process.

With the new browser-based Software-as-a-Service (SaaS) offering we have made automating your workflow easy. **With the new Automation Engine SaaS, you really can plug in and go.** By connecting your entire organization to one shared database, you can centralize and standardize your operations, systems and data, enabling teams to talk, share and collaborate easily wherever they may be.

Automation Engine also comes with extensive business system integration capabilities and is highly scalable.

Automation Engine serves as the heart of any size prepress production operation. It enables unparalleled workflow automation with rock-solid quality control.



Cut cost, time & errors

More jobs a day

Automation Engine features easy to use workflow editing and monitoring tools. These come with a visual and intuitive workflow design tool that makes any workflow easy to set up.

Throughput and efficiency are increased by means of the conditional automation tools. These tools reduce operator intervention, hand off tasks to the server and allow for automated decisions and routing in the workflow. The result: more jobs get done at the end of the day.

Thanks to Automation Engine we have only four employees in our prepress department today and our reprints are ready in a few minutes. Essentially, Automation Engine is now the beating heart of our company.

- Alès Cokan, Prepress Manager
at LabelProfi

On time delivery

Any activity on output devices is automatically registered. The Automation Engine Device Manager has a bi-directional link with devices such as the Esko CDI imager and Kongsberg cutting table.

The Device Manager moves operational control upstream to the prepress department. Flexo platemaking and digital finishing operations are better integrated with the prepress workflow. Operators use Device Manager to monitor job statuses, and to manage and prioritize the queues of all connected devices.

The Device Manager allows companies to use their hardware at maximum capacity by smart estimation functionality and the possibility to balance loads between devices. Automation Engine also communicates with visual inspection systems, eliminating set-up time, cutting operator errors and saving 3-5 minutes per job.



Reduce manual intervention by up to 70% - build quality into your processes and further increase quality with our unique assisted quality checks



Increase efficiency & throughput - by standardizing your processes and off-loading tasks to the automated workflow software, you significantly increase throughput



Save time & money - handle 50% more jobs without the need to increase your headcount

Leverage the cloud to reach new heights

Boost productivity, deliver new efficiencies and empower your teams to focus on the work that grows your business with our new cloud-based solution. Automation Engine delivered as a Software-as-a-Service (SaaS) solution provides end-to-end workflow connectivity for optimized productivity across your operations, and sites.

Workflow automation. Simplified with SaaS

We are on a mission to make managing workflows easy. With the new SaaS offering, companies are able to deploy Automation Engine more quickly – with a simple plug in and go solution.

With Automation Engine SaaS the biggest benefit for us has been the hands-off IT deployment and maintenance. The simplicity of the Cloud-based offering means that we have the ability to build and grow, but with none of the traditional infrastructure considerations and challenges.

– Marybeth Foss, Senior Enterprise Prepress Architect, Fortis Solutions Group

By connecting an entire organization to one shared database, Automation Engine is able to centralize and standardize operations, systems and data. This enables teams to talk, share and collaborate easily across sites and locations.

Alleviate the IT burden

The simplified licensing model further removes the headache of managing and maintaining onsite IT infrastructure. With fast deployment options available, Automation Engine can be implemented with reduced IT capital overheads and accelerated time to ROI.

Furthermore, interruptive software updates can become a thing of the past with centrally managed updates – ensuring that each version of the software is consistent across each site.

As a SaaS software solution, companies pay via a simplified subscription model, with the ability to scale as demand requires. With Esko managing the IT, the solution comes backed with an up to >99.5% uptime SLA.

Automated imposition, step-and-repeat and nesting

Automation Engine features automated imposition, step-and-repeat and gang run printing. The advanced job management that is available for “page production” environments offers a comprehensive overview of the entire prepress department in relation to pages, proofs, sheets and plates status.

To optimize (large format) sheet layout, Automation Engine offers gang run printing functionality. Automation Engine will search for the most optimal fill on different sheet sizes, taking into account the finishing steps, such as guillotine cutting.

All jobs for gang run printing are organized per substrate in a dedicated view. When integrated with your stock management, nesting is even optimized on an up-to-date substrate inventory.



Do more without adding headcount

Smart and automated data management

A 'Job' in Automation Engine represents a production order that organizes the data storage for the job and its metadata, link to order ID, due date, customer info, Customer Service Representative contacts...

A Job can also contain graphical specifications like barcode, inks and RIP option. This information can be used in any workflow to take advantage of all the data that is already there, avoiding double entries.

3D mockups and reports in seconds

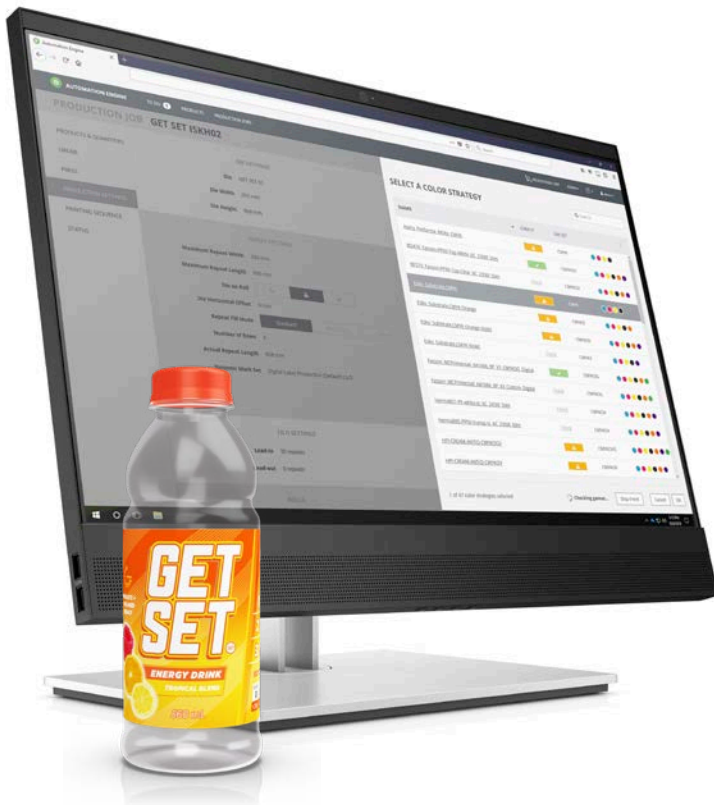
The Reporting & 3D module in Automation Engine generates "report cards" in seconds. These report cards are based on templates and use details that can be extracted from the database (customer information, like ink coverage, barcode specs etc.).

3D PDF files can be generated from the job's structural data. They can be merged with the graphical data giving a comprehensive view of how the actual job will look.

Automated multi-color profile conversions

Automation Engine provides the opportunity to centralize color management. Color tasks are fully integrated with the rest of your pre-press workflow.

Conversions to four color or multi-color profiles allow you to color manage any (digital) press from within your workflow, providing maximum color consistency, repeatability and predictability.



Zero tolerance for errors

Automation Engine offers extensive quality assurance tools. Prepress operators or admin staff can detect errors early in the workflow.

The unique Automation Engine Viewer handles all common prepress formats, images and RIP data. Extensive measuring and QA tools provide sophisticated means to check whether the file is ready for print.

Check separations, trim and media sizes, even compare differences between design files and production files, or easily check whether all corrections have been applied.

Automated compare tools are available in the workflow to streamline comparison of larger batches of files.

Additional quality control features - powered by Global Vision - allow for automatic quality control checks (text, artwork, spelling, braille, barcodes) and automatic quality control reports. The result: a secure prepress flow with accurate quality.

Reduce plate waste

The Automated Flexo Platemaking feature allows running a fully automated workflow, saving manual interventions and plate waste.

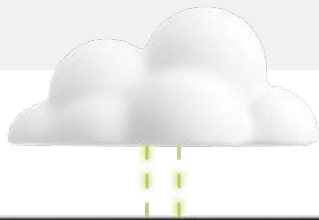
What's more, Automation Engine's Device Manager moves operational control upstream to the prepress department. Operators can monitor job status, and manage and prioritize the queues of all connected devices.



Integrate with your business system

With Automation Engine SaaS we can centralize resources in terms of expertise, software and hardware, delivering cost and time savings and reducing operational risks. Therefore, this is great timing and exactly in line with Essentra's strategy for 2021 and beyond.

– Mark King Technical Manager –
Division, Essentra Packaging



NAME	ACTIONS	CATEGORY	STOCK ID	SUBSTOCK ID	RUN DATE	JOB
000001_001		PLA Category	000001	000	April 9, 2021 9:30 AM	Print Lead
000002_001		PLA Category	000002	000	Apr 9, 2021 9:30 AM	Print Lead
000003_001		Pharma	000003	000	Apr 9, 2021 9:30 AM	Print Lead
000004_001		Digital	000004	000	Apr 9, 2021 9:30 AM	Print Lead
000005_001		Structural/Display	000005	000	Apr 9, 2021 9:30 AM	Print Lead
000006_001		Pharma	000006	004	Apr 9, 2021 9:30 AM	Print Lead
000007_001		PLA Category	000007	004	Apr 9, 2021 9:30 AM	Print Lead
000008_001		Pharma	000008	000	Apr 9, 2021 9:30 AM	Print Lead
000009_001		Pharma	000009	007	Apr 9, 2021 9:30 AM	Print Lead
000010_001		Pharma	000010	006	Apr 9, 2021 9:30 AM	Print Lead
000011_001		Structural/Display	000011	008	Apr 9, 2021 9:30 AM	Print Lead
000012_001		Digital	000012	008	Apr 9, 2021 9:30 AM	Print Lead
000013_001		Pharma	000013	008	Apr 9, 2021 9:30 AM	Print Lead
000014_001		Pharma	000014	008	Apr 9, 2021 9:30 AM	Print Lead
000015_001		Pharma	000015	008	Apr 9, 2021 9:30 AM	Print Lead

The integration between your workflow and your business systems is an obvious next step. To streamline the complete process and to avoid introducing errors, it makes perfect sense to connect the MIS/ERP to the prepress department. And Automation Engine will provide digital and instant feedback.

We work with many MIS vendors to create sustainable integrations, which are thoroughly tested with each release to ensure business continuity.

The Automation Engine Connect module also allows integration from any third party product with any Esko component without the need for lengthy and extensive consultancy projects. This is a scalable and sustainable solution without the need for custom development.

Automate print inspection, increase press uptime

Automation Engine closely integrates with AVT inspection systems. Data is automatically sent from Automation Engine to AVT's inspection system, where even very short runs can be automatically inspected, resulting in exceptional print quality and process control.

Choose your deployment option



Software-as-a-Service (SaaS)

Remove IT infrastructure headaches and overheads with the new Automation Engine SaaS deployment option. The new subscription-based model enables companies to adopt a lighter-IT-touch solution.

The solution is offered on-demand, with companies paying on a simple subscription model. IT maintenance is handled by Esko and software updates are centrally managed.

The centralized solution offers more opportunity to standardize processes across all sites – with greater potential to boost operational productivity and capacity by quickly and easily sharing jobs from site to site.



Preconfigured

We have taken our 30 years of packaging knowledge and wrapped them up into ready-made workflows. These automate routine tasks, such as Preflight checking, Trapping, Step and Repeat, Automated report generation and integration with your data systems and of course your digital press. What's more, you are ready to take advantage of these workflows in less than 5 days.



Custom Deployment

Our experienced colleagues have extensive knowledge of both the packaging industry and our solutions. We are able to scope your requirements and implement them efficiently to ensure you take advantage of the technology as quickly as possible.



Automation Engine addresses the needs of digital printers

Color preflight

Automation Engine will check that brand color expectations are met, avoiding surprises on press. You will print with the most efficient ink set and increase press uptime and equipment utilization. Color Preflight removes guesswork and rule of thumb thinking but uses rules and color science.

Automate artwork creation

Automation Engine is the first workflow server to offer automatic processes for artwork creation in line with brand guidelines. Artwork creation used to be a lengthy process; linked with Adobe software, Automation Engine makes this fully automated. Creating new SKUs is now fast, easy and error-free.

Variable Data Printing

Automation Engine also allows Variable Data Printing on all types of digital presses. Create variable data designs directly in Adobe Illustrator. There's automated preflighting and QC which means you can print first time right. The Automation Engine takes care of fast expansion, or it can be offloaded to an Esko DFE.

Esko Digital Front End (DFE)

The Esko DFE is turnkey software to drive digital presses, developed by Esko. The DFE is fully connected to the Esko workflow and contains a RIP, Color Management, variable data expansion and several other functions. The DFE is available from digital press vendors who partner with Esko to deliver a productive solution to drive their presses.

Combination press

Preparing files for a combination press can be both time consuming and error prone. Automation Engine can apply the correct parameters to the correct separation based on the printing process. This not only simplifies the management of these files but also increases both efficiency and quality.



Included Features



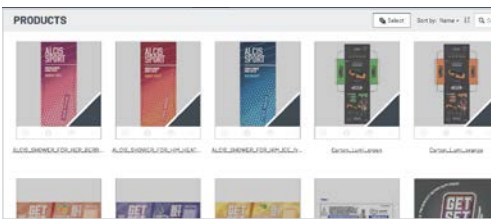
Automation Engine Base

This is the main framework. It allows you to build workflows and has routing capabilities. It comes with basic graphics tasks (e.g. file import, trapping, color conversion, file cleaning ...) and allows SmartNames.



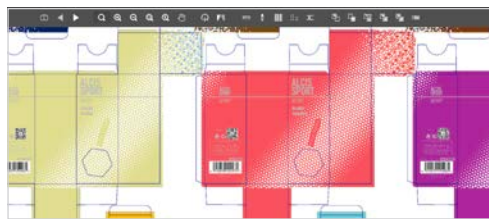
Layout

The Layout feature offers all tools to step & repeat, impose or nest files. The layout module supports any segment: labels, folding carton, flexible packaging, corrugated, digital, commercial print, signage or display production.



Job Management

The Job Management feature allows users to efficiently organize production data. Users navigate their way through an intuitive browser-based interface called My Workspace. My Workspace provides a platform for open communication, collaborative working and the ability to work anytime, anywhere.



Processor

The Processor feature offers integrated Enfocus Pitstop preflighting, variable data expansion and advanced processing tasks on PDFs.



Reporting & 3D

This feature collects all relevant production data to generate automated customized reports for customers and quality control. The module also creates 3D files automatically.



Viewing & QA

Detect content errors on any file type prior to any output, this feature offers detailed quality control tools for all jobs: braille reading, barcode scanning, version comparison.

Additional feature options



Connect

The Connect feature offers the easiest way to integrate Automation Engine and WebCenter with third party systems (MIS, ERP, shipping systems, Box, SAP etc.)



Automated Flexo Platemaking

The Automated Flexo Platemaking feature allows running a fully automated workflow, reducing errors, saving manual interventions and plate waste.



Color

The Color feature offers centralized brand color management with ink saving tools and advanced color conversion tasks.



Inspection

The Inspection feature allows a faster setup of the inline inspection device which is essential when dealing with short runs and variable data printing.

Belgium

Kortrijksesteenweg 1095, 9051 Gent | Tel. +32 9 216 92 11 | info.eur@esko.com

USA

8535 Gander Creek Drive, Miamisburg, OH 45342 | Tel. +1 937 454 1721 | info.usa@esko.com

Brasil

Rua Professor Aprígio Gonzaga, 78 - 10º andar - São Judas - 04303-000 - São Paulo | Tel. +55 11 3550-1311 | info.la@esko.com

Singapore

8 Changi Business Park Ave 1, UE BizHub East #07-51, South Tower, 486018 | Tel. +65 6420 0399 | info.asp@esko.com

Japan

Telecom Center Building, West Wing 6F, 2-5-10, Aomi, Koto-ku, Tokyo, 135-0064 | Tel. +81(3) 5979 6086

China

Floor 6, Building 1, 518 Fuquan North Road, Shanghai, 200335 | Tel. +86 21 3279 6555 | info.china@esko.com